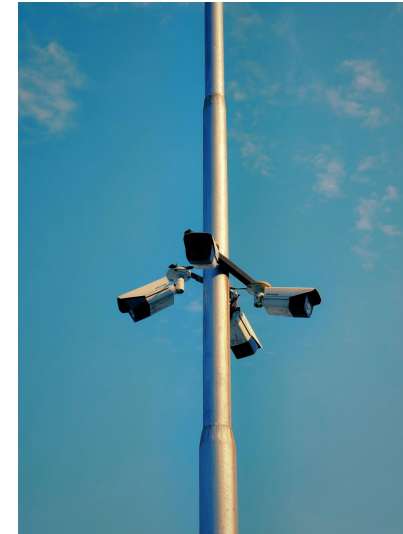


Engineers the world with Expertise and Hard Work

- Based in **China Steel Tower Base**, Hebei Province, near Beijing.
- Factory Area **66,000 m<sup>2</sup>**
- **200+** sets of production machines
- Annual capacity of **50,000 tons**
- **11 R&D experts.**
- **200+** skilled workers



Product	CCTV Camera Pole
Height	5000mm~6800mm
Thickness of the wall	4mm~14mm
Arm length	1000mm~16000mm
Material	GB Q235 or A36
Base flange thickness	≥14mm



# Trail Assembly

All finished parts need to be checked

For each order, we will do trail assembly before mass production to avoid any quality flaw.



## Rooftop Telecom Tower Features



To Be Reliable

## Surface Treatment

As Per Request

## Hot-dip Galvanization

ASTM/A123

GB/T 13912-2002

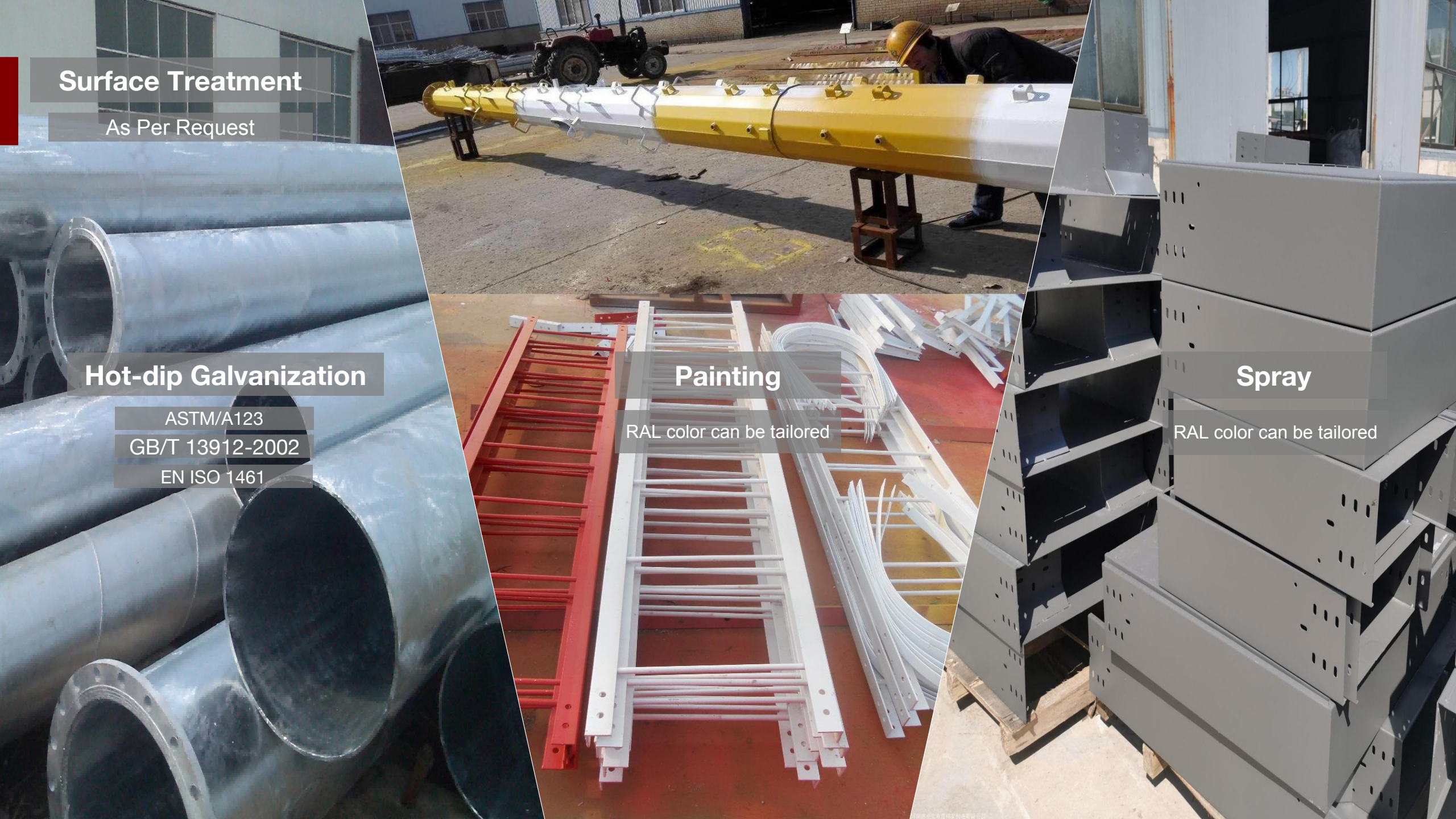
EN ISO 1461

## Painting

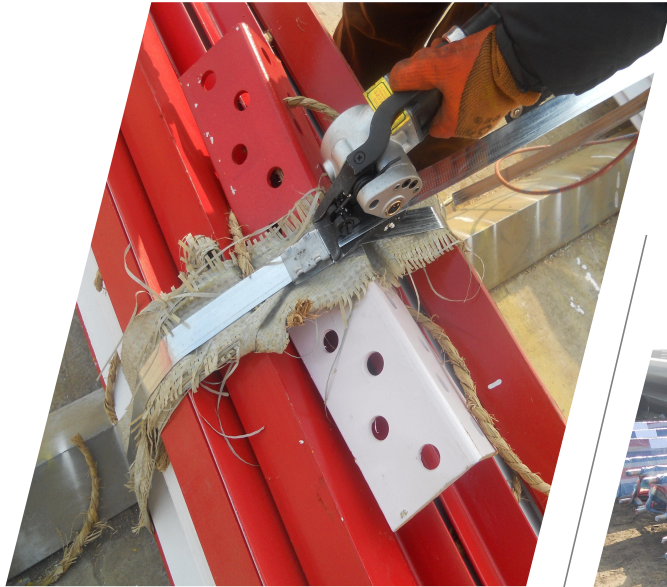
RAL color can be tailored

## Spray

RAL color can be tailored



# Packing



Steel Stripe

For Fastening

Oil Platstic

For Waterproof &  
Moisture-proof

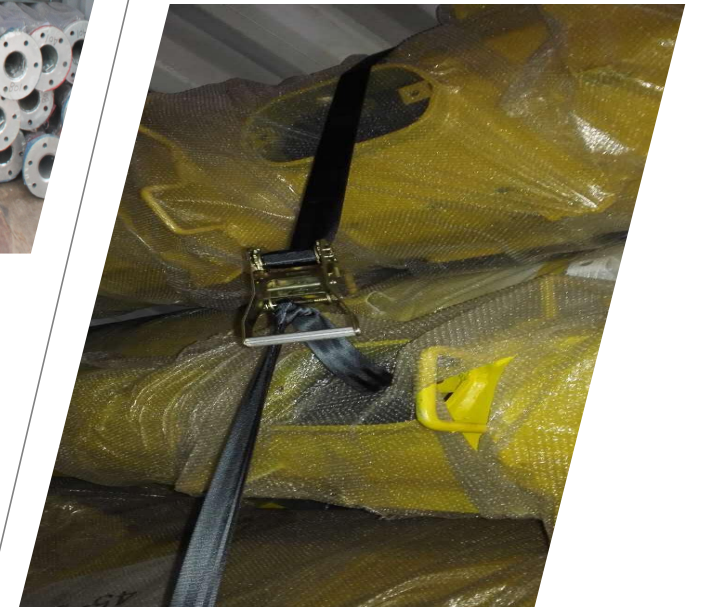


Steel Bar

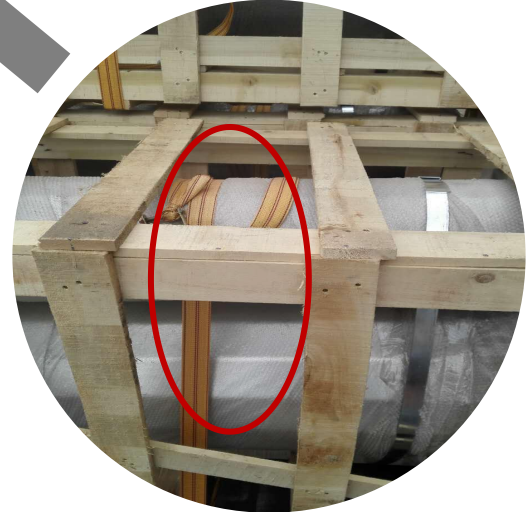
To Fix the Goods

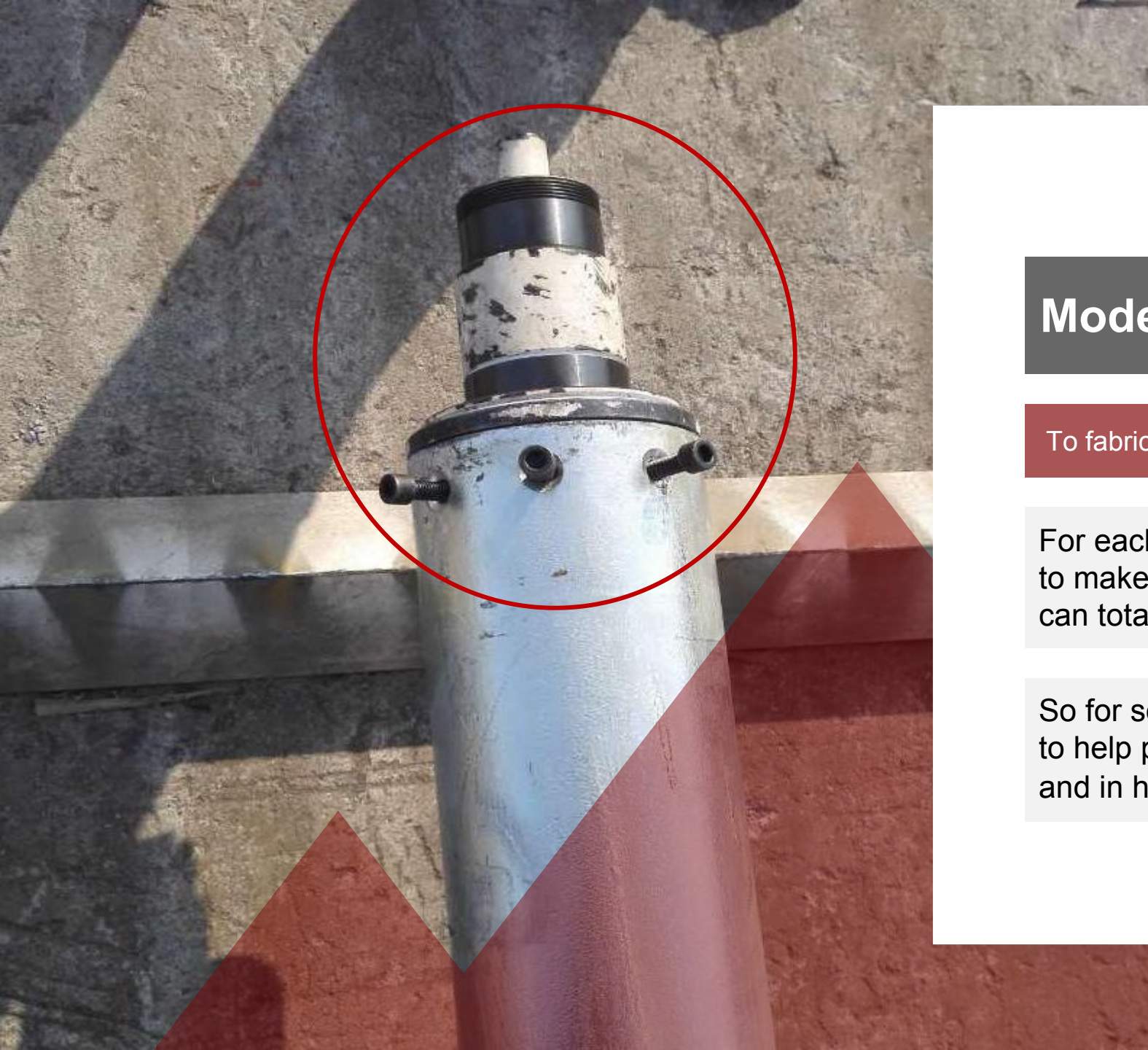
Binding Strap

For Strengthening



# Customized Packing





## Model ( Turbine base )

To fabricate the product more accurately

For each order, we will do as much we can to make sure that the product we produce can totally function well.

So for some projects, we will make a model to help process the parts more accurately and in high efficiency