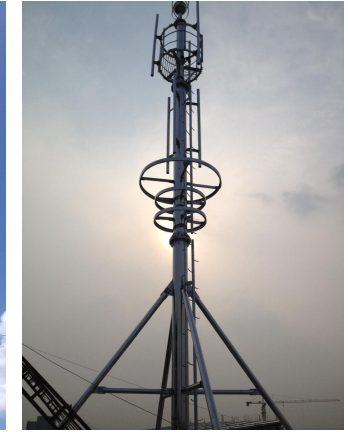
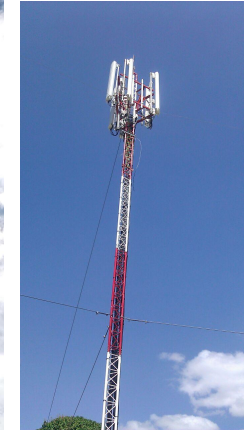


- Based in China Steel Tower Base, Hebei Province, near Beijing.
- Factory Area 66,000 m²
- 200+ sets of production machines
- Annual capacity of 50,000 tons
- 11 R&D experts.
- 200+ skilled workers



Product	Rooftop Tower
Height	0-30m
Material	Q355B & Q235B or A36/A572 Gr50/S355JR
Basic Wind speed	0~180km/h (American standard 3s gust)
Antenna Type	GSM, RRU,CDMA, MW etc.
Antenna load	As per request and design
Surface treatment	Hot dip galvanized/Painting/Spray
Dsign standard	GB / ANSI / TIA-222-G
Welding Standard	AWSD1.1
Color	As per request
Nuts and Bolts	Gr 6.8 and 8.8
Service life	30/50 years

Trail Assembly

All finished parts need to be checked

For each order, we will do trail assembly before mass production to avoid any quality flaw.



Rooftop Telecom Tower Features



To Be Reliable

Surface Treatment

As Per Request

Hot-dip Galvanization

ASTM/A123

GB/T 13912-2002

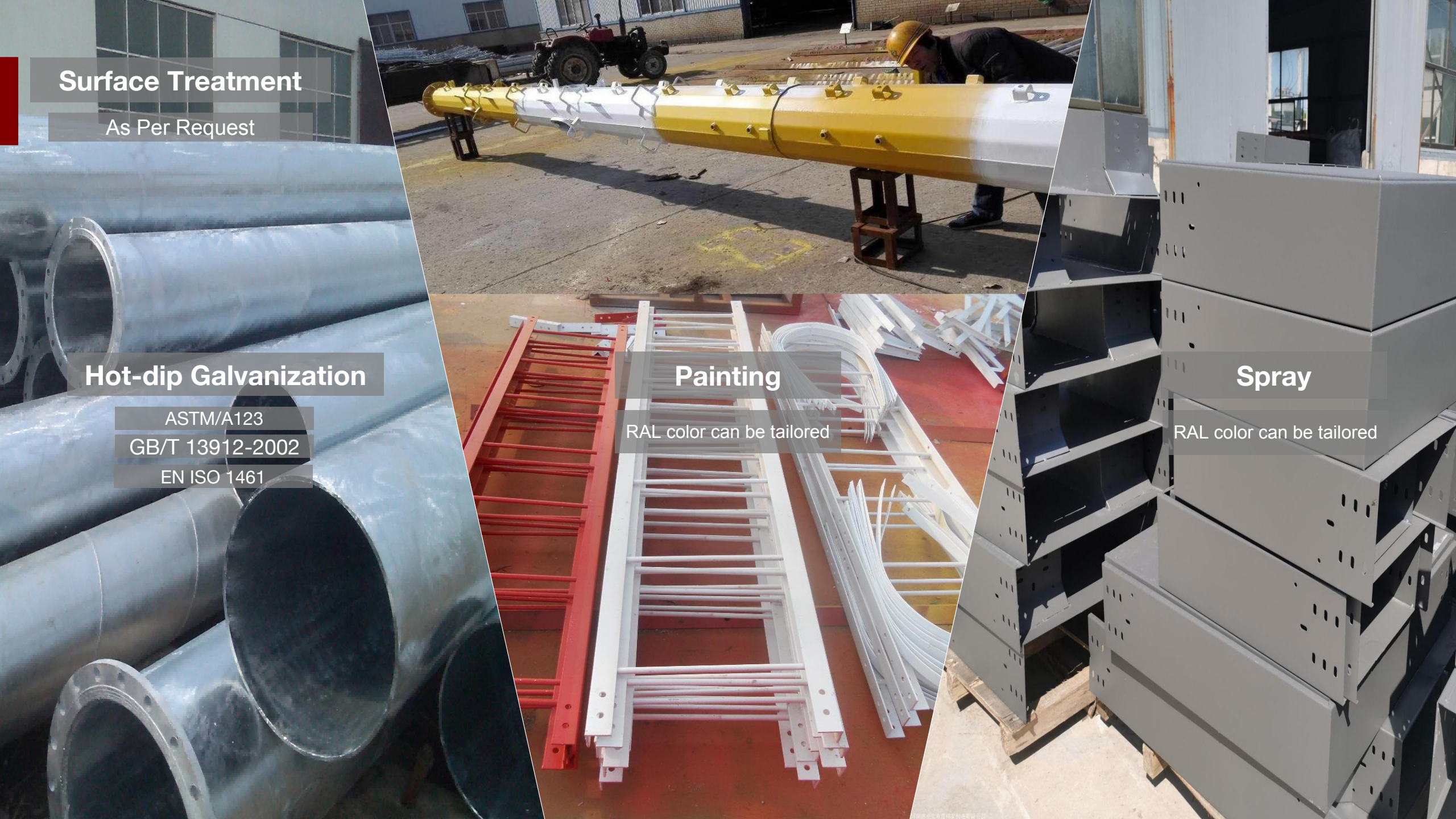
EN ISO 1461

Painting

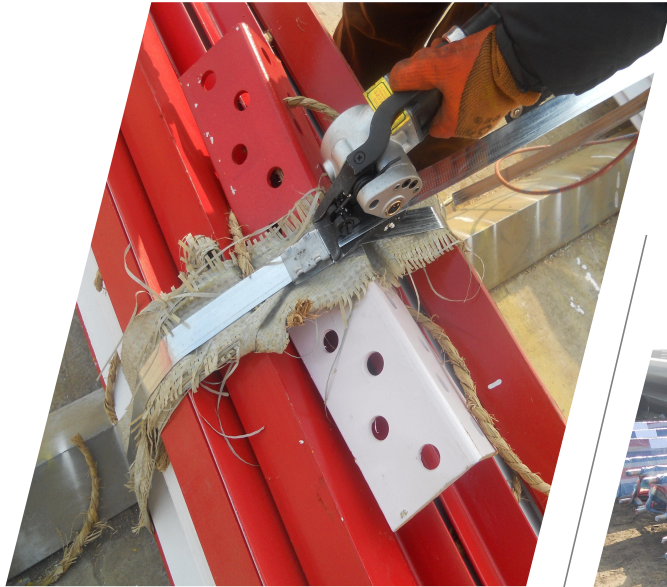
RAL color can be tailored

Spray

RAL color can be tailored



Packing



Steel Stripe

For Fastening

Oil Platstic

For Waterproof &
Moisture-proof

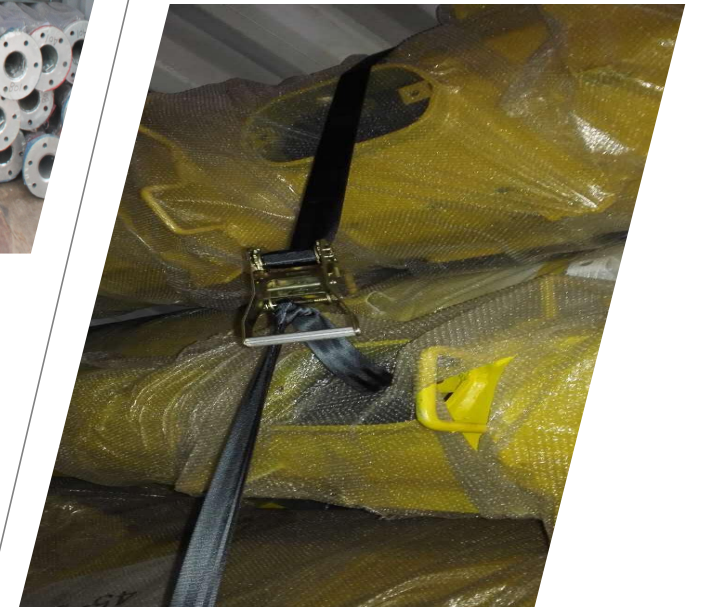


Steel Bar

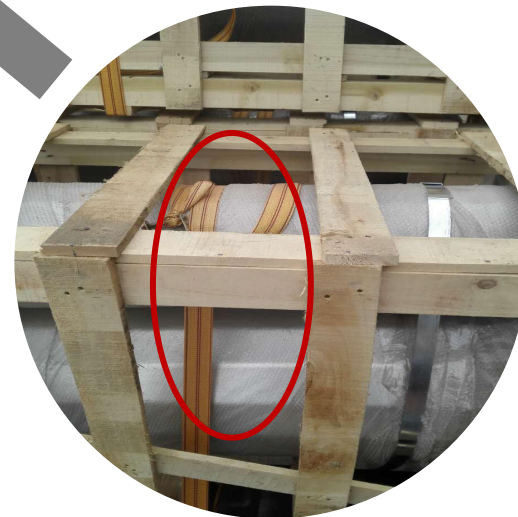
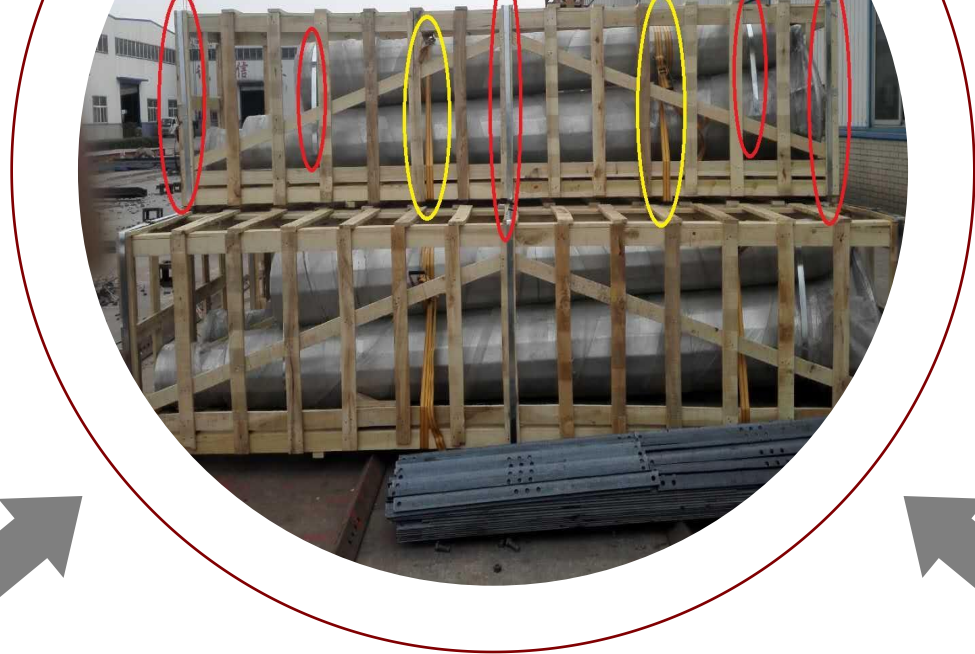
To Fix the Goods

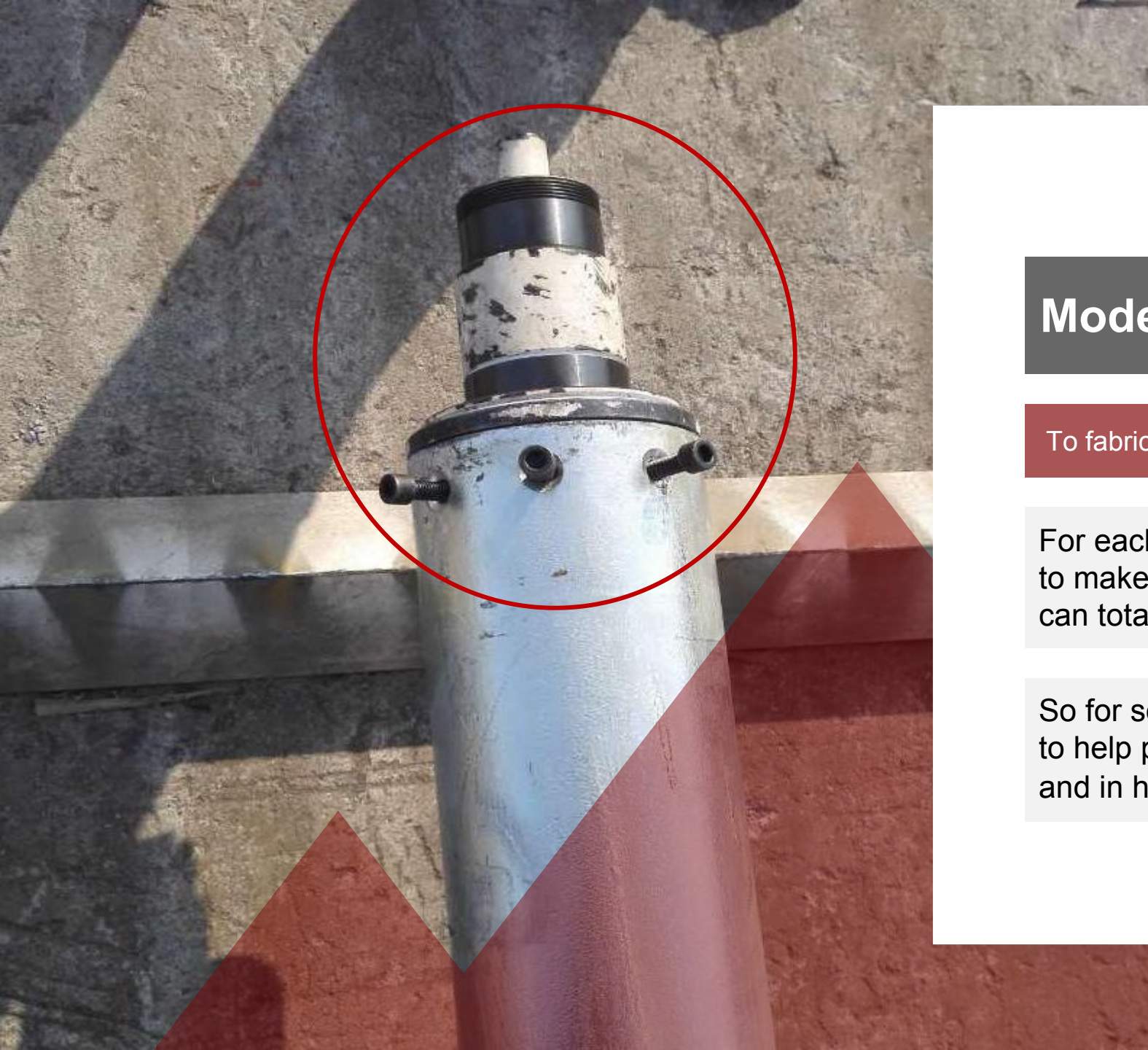
Binding Strap

For Strengthening



Customized Packing





Model (Turbine base)

To fabricate the product more accurately

For each order, we will do as much we can to make sure that the product we produce can totally function well.

So for some projects, we will make a model to help process the parts more accurately and in high efficiency